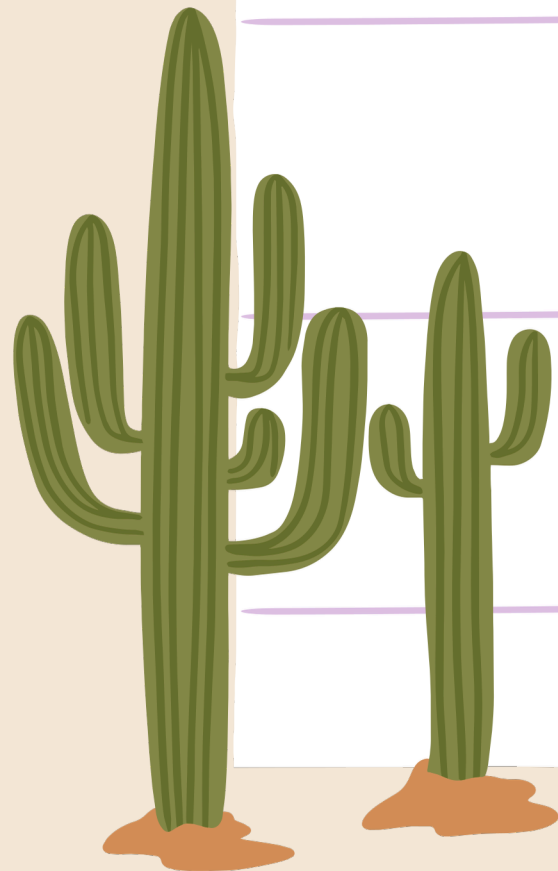




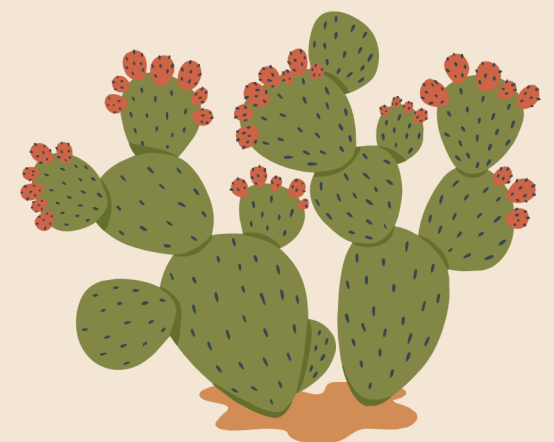
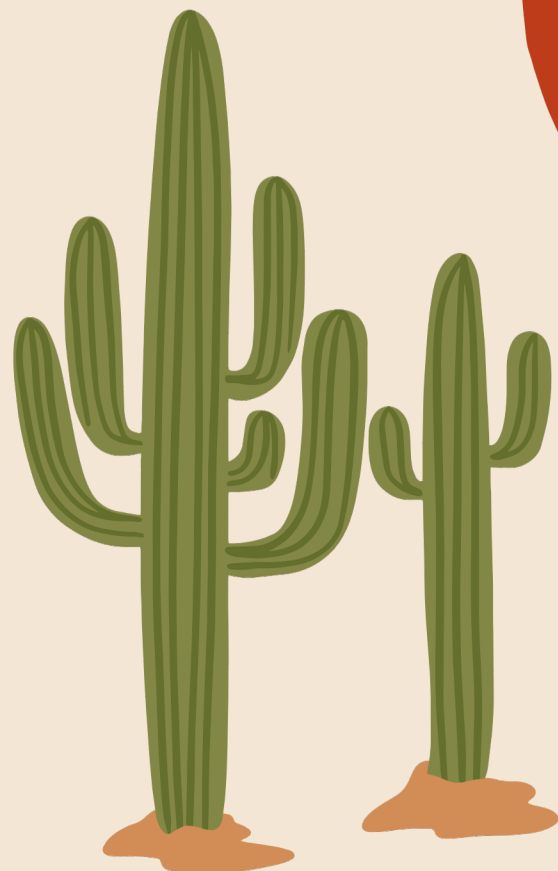
Annual Title I Parent Meeting

P.B. Ritch Middle School 60 Old
Country Rd. Dallas, GA 30157 Virtual
Meeting October 21, 2024 10:00 am



Welcome parents and community members!

We welcome your feedback throughout this presentation! We want to ensure you leave informed about the Title I program and know what opportunities we provide for families and the community to be involved.

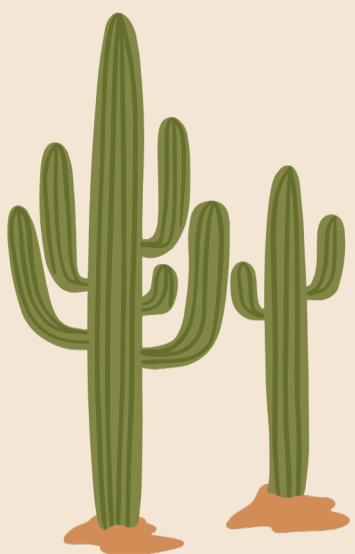
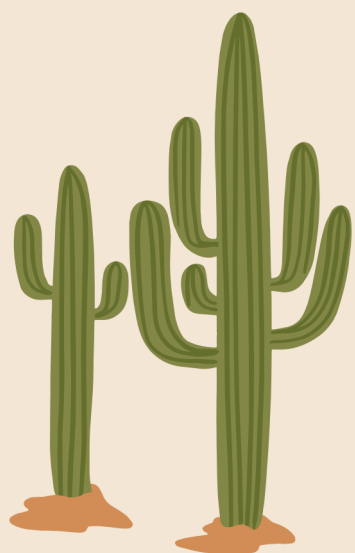


What Is a Title I School?

- Title I was enacted in 1965 under the Elementary and Secondary Education Act and amended by the Every Student Succeeds Act (ESSA). It is the largest Federal Assistance Program for our nation's schools.

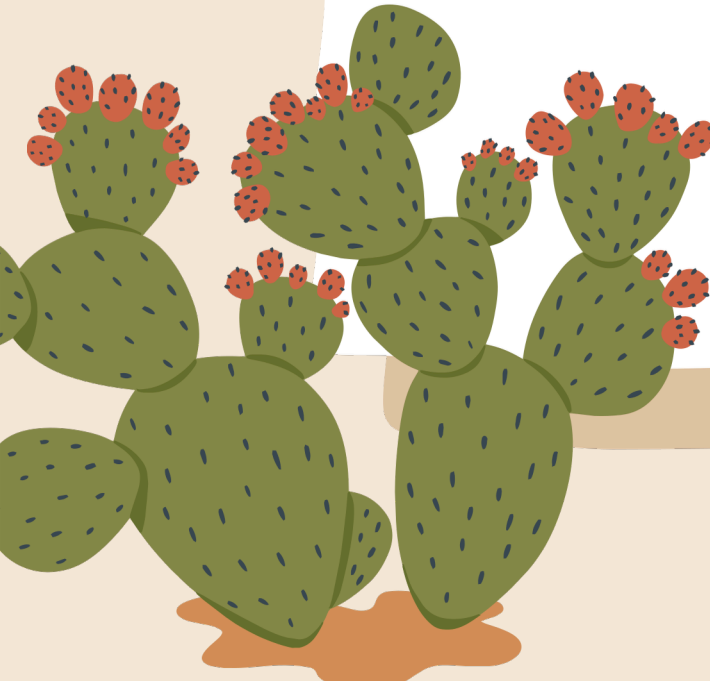

The purpose of Title I is to ensure that all children have a fair, equal, and significant opportunity to obtain a high-quality education and to achieve proficiency on high academic standards.

Title I provides federal funds through the Georgia Department of Education to Title I schools based on the student population receiving free and reduced meals. Funds are used to help impact student achievement.





Title I funds are applied to:

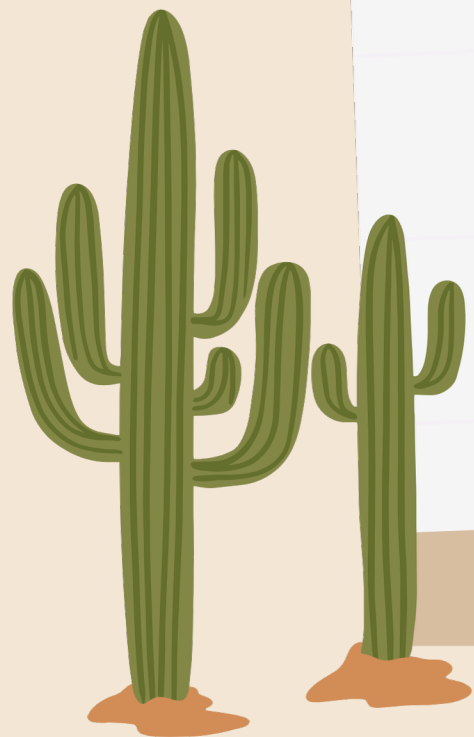
- Supplementing programs that are already in place in schools, with the goal of providing all students with equal opportunity for achieving academic success
 - Hiring additional teachers and other support staff
 - Purchasing supplemental (additional) instructional materials, resources, and educational programs
 - Conducting parent activities and workshops focusing on how the school and families can work together to support students in content academic areas and other opportunities parents request
 - Providing professional development for teachers and staff
 - Establishing a parent resource center
 - Outreach to local Pre-K schools
- 
- 



How P.B. Ritch Middle Participates in the Title I Program


- Provides additional support for instruction
 - Math – reduced class size model
 - Tutoring Opportunities
- Provides supplemental materials for instruction
- Establishing and maintaining a Family Resource Center
- Provides professional learning for staff
- Provides parent engagement opportunities

○





Our Schoolwide Requirements

- Identifying school needs and areas requiring academic focus for improvement by reviewing student achievement data
 - Setting goals for improvement, and making plans to incorporate strategies that are based on scientific research to increase student achievement
 - Identifying students who will benefit from additional support
 - Partnering with families in order to provide the best support possible for all students to make progress
 - Providing staff with training, professional learning, resources, and materials in order to enhance their teaching, and ability to work effectively with families
 - Sharing of School Improvement Plan
- 



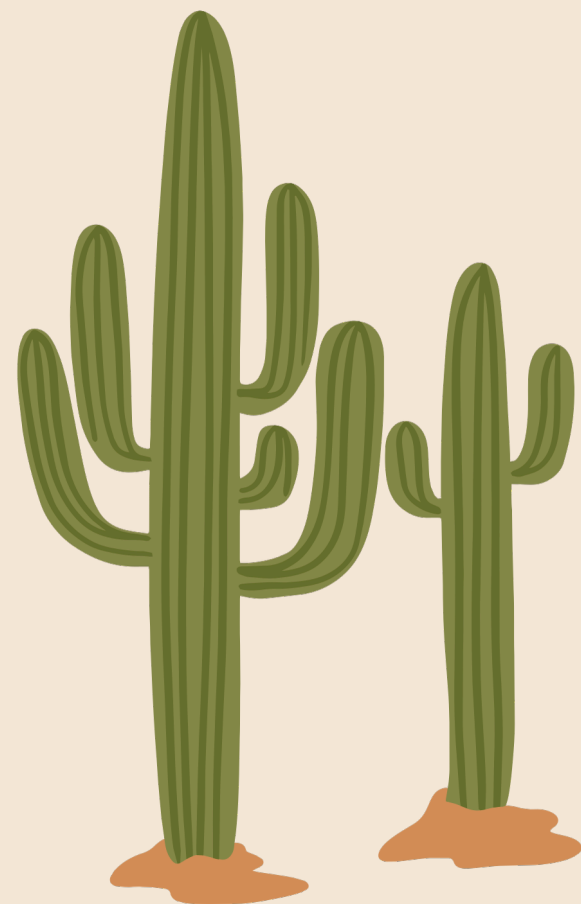
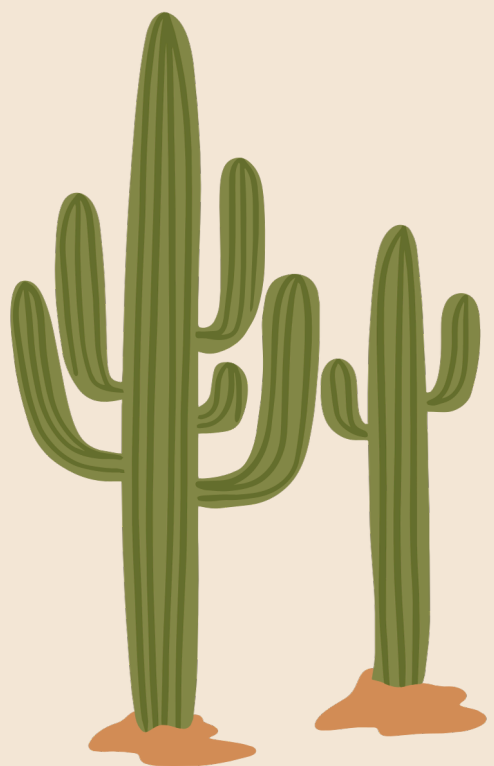
P.B. Ritch Middle TA Program



- Our Title I TA Improvement Plan (schoolwide goals) includes the following:
During the 2024-2025 school year, we will increase the percentage of students scoring Level 3 or 4 on the ELA section of the Georgia Milestones assessment.

During the 2024-2025 school year, we will increase the percentage of students scoring Level 3 or 4 on the Math section of the Georgia Milestones assessment.

During the 2024-2025 school year, we will enhance student and staff relationships through the utilization of the Minga Digital Pass and Minga Behavior software increasing the percentage of students with one or less office referrals.

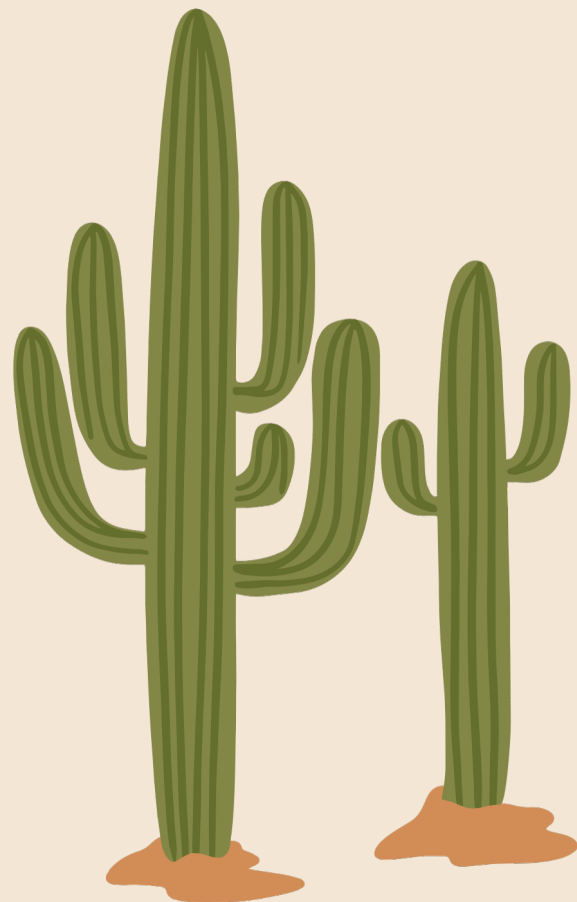


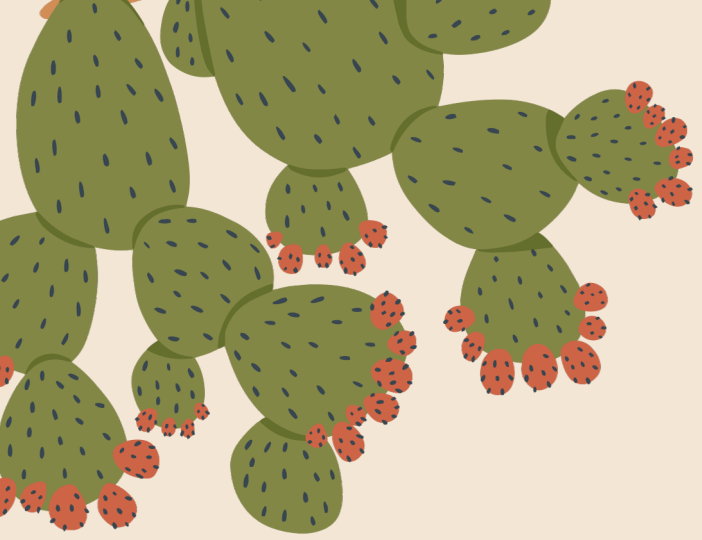


P.B. Ritch Middle TA Program



- The programs and supports in place to help us achieve these goals: Focus - Math Reduced Class Size model
Professional Learning for Staff
Parent Engagement Opportunities





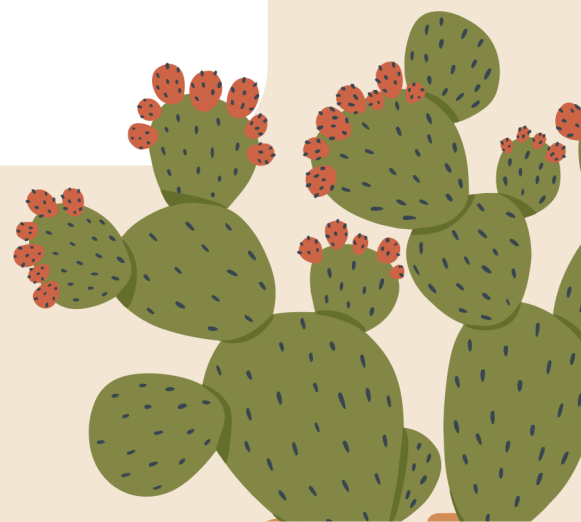
Curriculum Used at School


1.

Illustrative Math -
Math Curriculum
utilized for daily math
instruction

2.

Lift Off- Research
based math
intervention program
for grades 2-8



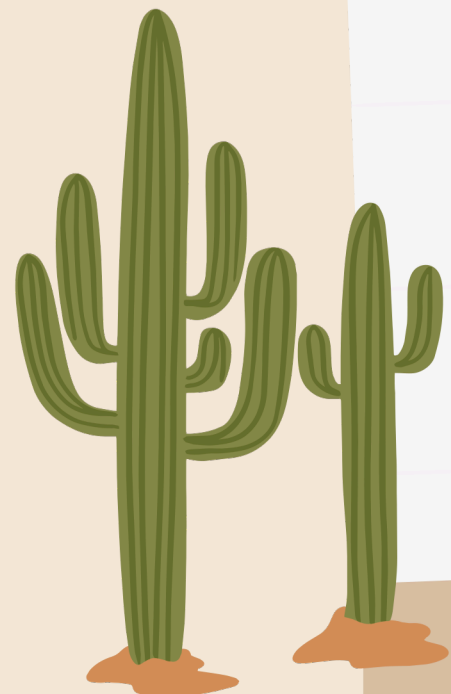


Tests and Assessments for Students in Middle Grades

Teacher - Projects, Reports, Unit/Chapter Tests, Presentations

County - DRC Beacon Assessment

State - Georgia Milestones, ACCESS, GKIDS, Georgia Alternative
Assessment



Other assessments may apply. If applicable, our school will notify parents/guardians.

Tests and Assessments for Students in Elementary/Middle Grades

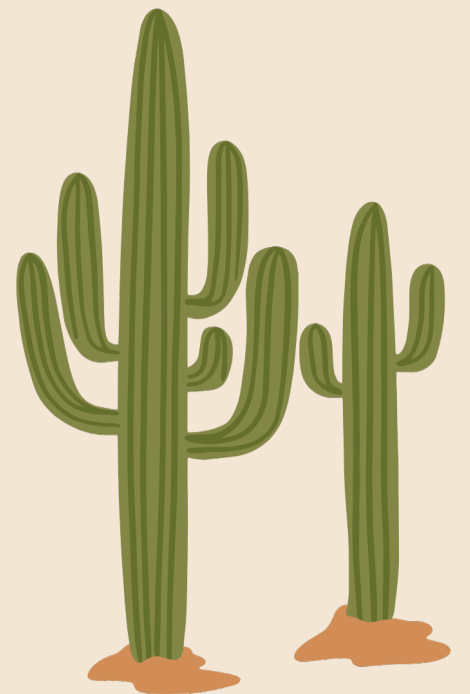
How do these assessments measure student progress?

- Identifies areas in need of improvement, and plan for instruction
- Provides information for teachers and parents on areas where students have mastered learning and where they may need additional support
- Provides information to plan for "next-steps" so that the student will experience continuous growth

What proficiency level is my child expected to meet?

- Teachers share specific information about student expectations/goals and assessment results during parent meetings, conferences, and at the request of parents/guardians

Access previous test performance, standards, and attendance about my child using the Statewide Longitudinal Data System (SLDS) through the school's parent portal (if applicable)



Georgia Milestones

- Designed to measure how well students have learned the skills and knowledge described in the curriculum in the areas of English Language Arts and Mathematics in 6th, 7th, 8th grade
- Science and Social Studies, 8th grade
- Taken at the end of the school year
- Provides information on academic achievement at student, class, school, system, and state levels
- Used to diagnose individual student strengths and weaknesses as related to the instruction of the state-adopted curriculum, and to gauge the quality of education throughout Georgia.



FY25 Family Engagement Plans



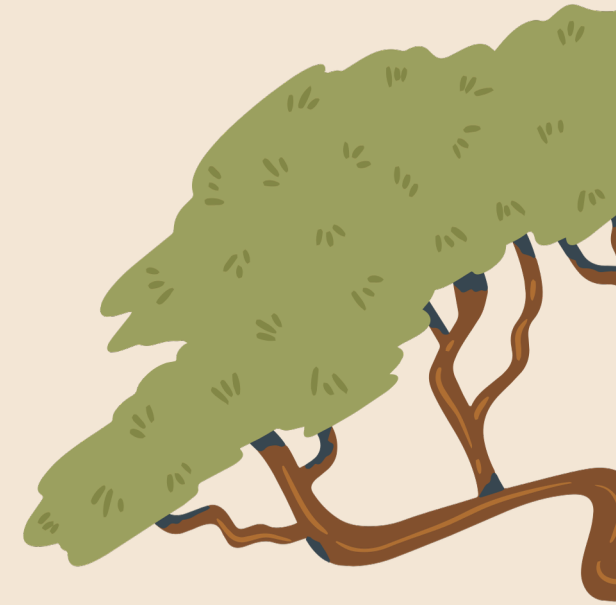
PCSD Family Engagement Plan

P.B. Ritch Family Engagement Plan

Family – School Compact(s)



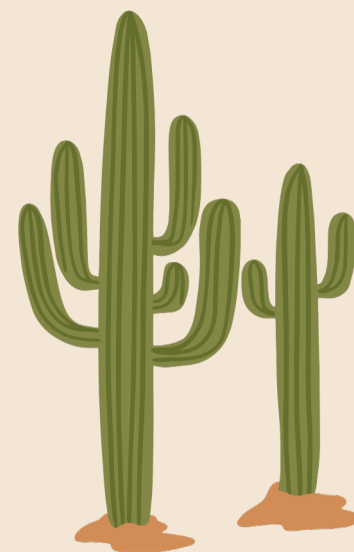
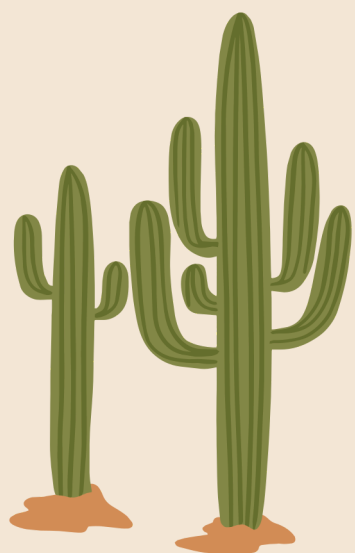
Teacher Professional Qualifications



Parent's Right-to-Know

All parents have the right to request the following information about the professional qualifications of your student's teacher(s):

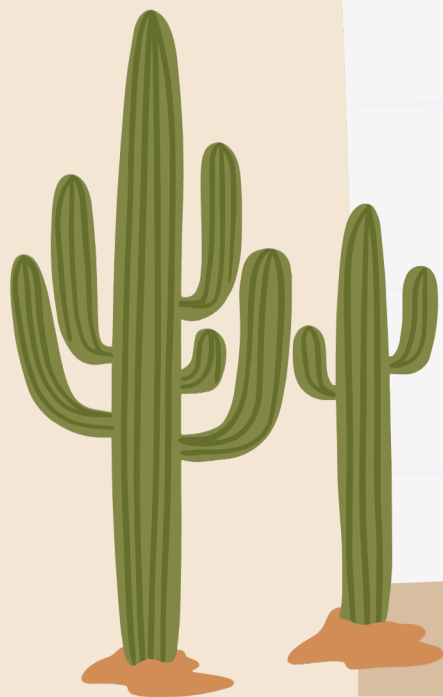
- Whether the teacher has met the Georgia Professional Standards Commission's requirements for certification for the grade level and subject areas in which the teacher provides instruction;
- Whether the teacher is teaching under an emergency or other provisional status through which Georgia qualifications or certification criteria have been waived;
- Whether the student is provided services by paraprofessionals, and if so, their qualifications.



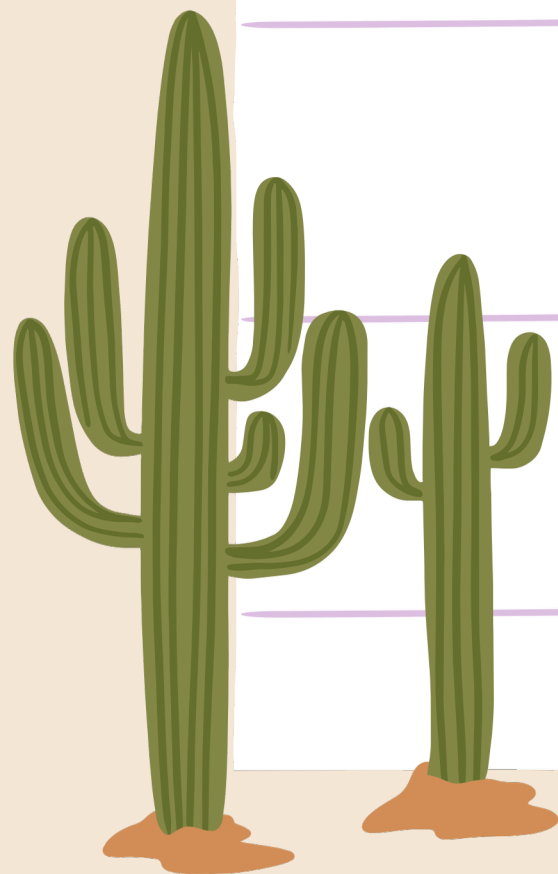


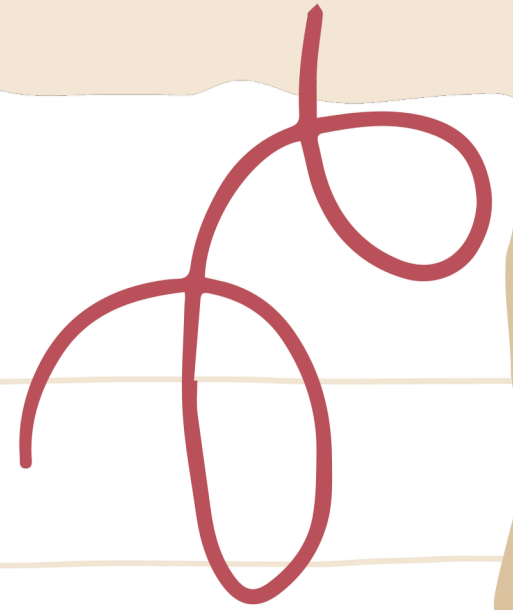
Parent & Family Engagement Opportunities

- Family Engagement Opportunities with FAME Nights (Families Achieving Math Excellence)
- Volunteer opportunities
- Parent decision-making opportunities/meetings/councils



**Any
Questions ?**





Thank

~e you

